



The Welding Motion
Virtual Trainer



BOOST YOUR TRAINING

by a progressive learning of the welding motion



IMPROVE YOUR FEEDBACK

by a real-time monitoring and control tool



SAVE MONEY

by reducing the raw material consumption

Welding workbench

The welding workbench is the training tool for the trainee. It is a motorised workbench equipped with genuine welding tools. These tools enable the trainee to acquire the welding motion by practicing several exercises through a progressive learning embedded in the training process.

By spending only 1 hour per day on this system, your trainees acquire the good gesture twice quicker and save more than 35% of raw material.

Versatile

The CS WAVE workbench reproduces **GMAW, SMAW and TIG welding** motions. Each workbench is multi-purpose and may be used to teach a variety of exercises on all processes.

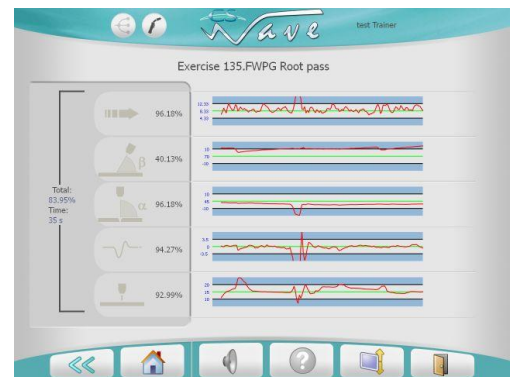


Adaptable

The visualisation system is motorised and may be positioned horizontally or vertically enabling a wide range of exercises to be carried out.

Educational

The welding workbench is also an excellent educational tool to assist the trainer. It provides several guides so that trainee mistakes and progress may be analysed.



Connected

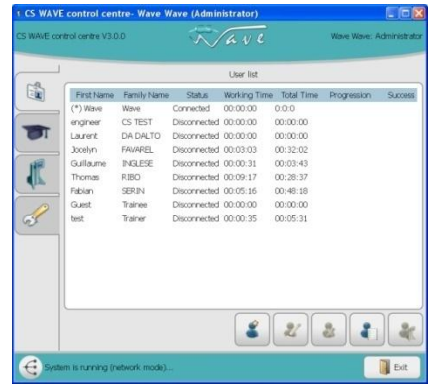
Each workbench offers network connection. If a network is installed, the workbench may be identified and can communicate with an existing CS WAVE module. Automatic updating and storage of results are carried out in real time.

Control centre

The CS WAVE control centre is the trainer's essential tool. It enables trainees to be monitored and supervised and their progress to be analysed during a training course. The control centre is the perfect assistant of the welding training.

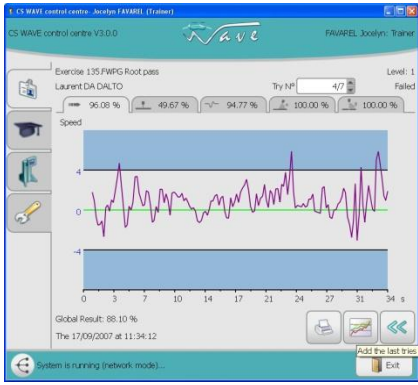
Control

The control centre offers overall monitoring of the use of CS WAVE in real time. The control centre's interface has been designed to be as legible and user-friendly as possible.



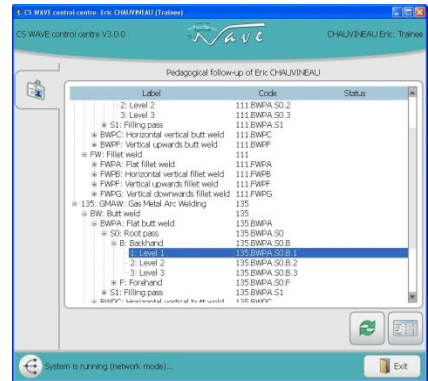
Analysis

Detailed analysis allows the trainer to view the cause of mistakes and to analyse how the trainee is progressing, setting by setting.



Guidance

The trainer may also set the various training stages and modify them at any moment, thereby adapting the training course to the individual learner's particular needs.



Access control

Each user of the control centre has specific access rights. Depending if you are a trainee, a trainer, a training manager or a system manager, you will have specific tools to access and update information. The system also provide an automated backup procedure and a archiving system for the user profiles.

Network

The control centre can have access to any workbench on which it will be authorized. This local or remote connection enables the trainer to control the learning progression of his group at anytime and anywhere.

CS WAVE Lite

The CS WAVE Lite is a portable version of the CS WAVE workbench. It comes with the same tools and all the existing features of its big brother.



This mobile version is installed in a case to be easily take away with you. It also comes with a network connection so it can be installed in your existing CS WAVE network as a "light" workbench for your trainees.

Website <http://wave.diginext.fr>
Email Info.wave@diginext.fr
Tel +33 56117 6699
Fax +33 56117 6578

DIGINEXT
ZAC de la Grande Plaine
5 Rue Brindejunc des Moulinais
BP 15872 - 31506 Toulouse Cedex 5
France